



Қазақстан Республикасы
Ұлттық инженерлік академиясының

ХАБАРШЫСЫ

ВЕСТНИК

Национальной инженерной академии
Республики Казахстан

№ 3 (85)

Алматы
2022

**МЕЖДУНАРОДНЫЙ
НАУЧНО-ТЕХНИЧЕСКИЙ ЖУРНАЛ
ВЕСТНИК НАЦИОНАЛЬНОЙ ИНЖЕНЕРНОЙ АКАДЕМИИ РК**

**ГЛАВНЫЙ РЕДАКТОР
академик Б. Т. ЖУМАГУЛОВ**

РЕДАКЦИОННАЯ КОЛЛЕГИЯ:

Н. М. Темирбеков – академик, заместитель главного редактора; **Е. И. Имангалиев** – ответственный секретарь; академик **Ж. М. Адилев**, академик **А. Ч. Джомартов**, академик **Р. А. Алшанов**, академик **М. Ж. Битимбаев**, академик **А. В. Болотов**, академик **А. И. Васильев** (Украина), академик **Б. В. Гусев** (Россия), академик **Г. Ж. Жолтаев**, академик **В. Ч. Вуйцик** (Польша), академик **К. К. Кадыржанов**, академик **К. С. Кулажанов**, академик **А. А. Кулибаев**, академик **М. М. Мырзахметов**, академик **Х. Милошевич** (Сербия), академик **Г. А. Медиева**, академик **А. М. Пашаев** (Азербайджан), академик **А. К. Тулешов**, академик **Б. Б. Телтаев**, академик **Ю. И. Шокин** (Россия).

**INTERNATIONAL
SCIENTIFICALLY-TECHNICAL JOURNAL
HERALD TO NATIONAL ENGINEERING ACADEMY
OF THE REPUBLIC OF KAZAKHSTAN**

B. T. ZHUMAGULOV
Editor-in-Chief, academician

THE EDITORIAL BOARD:

N. M. Temirbekov – academician, Deputy Editor; **Y. I. Imangaliyev** – Managing Editor; **Zh. M. Adilov**, academician; **A. Ch. Dzhomartov**, academician; **R. A. Alshanov**, academician; **M. Zh. Bitimbayev**, academician; **A. V. Bolotov**, academician; **A. I. Vasilyev**, academician (Ukraine); **B. V. Gusev**, academician (Russia); **G. Zh. Zholtayev**, academician; **Wójcik Waldemar** academician (Poland); **K. K. Kadyrzhanov**, academician; **K. S. Kulazhanov**, academician; **A. A. Kulibayev**, academician; **M. M. Myrzakhmetov**, academician; **H. Miloshevich**, academician (Serbiya); **G. A. Mediyeva**, academician; **A. M. Pashayev**, academician (Azerbaijan); **A. K. Tuleshov**, academician; **B. B. Teltayev**, academician; **Yu. I. Shokin**, academician (Russia).

УЧРЕДИТЕЛЬ:

Республиканское общественное объединение
«Национальная инженерная академия Республики Казахстан».

Издается с 1997 года.

Выходит 4 раза в год.

Свидетельство о регистрации издания № 287 от 14.11.1996 г.,
выдано Национальным агентством по делам печати и массовой информации
Республики Казахстан.

Свидетельство о перерегистрации № 4636-Ж от 22.01.2004 г.,
выдано Министерством информации Республики Казахстан.

Журнал включен Комитетом науки Министерства образования и науки Республики Казахстан
в перечень изданий для публикации основных результатов научно-технических работ соис-
кателей ученых степеней доктора философии PhD и доктора по профилю и ученых званий
доцента и профессора.

Журнал включен в международную англоязычную базу реферативных данных по техниче-
ским наукам INSPEC.

Подписку на журнал можно оформить в отделениях связи АО «Казпочта»,
ТОО Агентстве «Евразия пресс» и ТОО Агентстве «Еврика пресс».

Подписной индекс:

для физических лиц – **75188**,
для юридических лиц – **25188**.

Подписка продолжается в течение года.

Адрес редакции: 050010, г. Алматы, ул. Богенбай батыра, 80, к. 415.

Тел. 8-7272-915290, факс: 8-7272-915190,

e-mail: nia_rk@mail.ru, ntpneark@mail.ru, www.neark.kz

FOUNDER:

Republic public association

“National Engineering Academy of the Republic of Kazakhstan”.

Published since 1997 year.

Issued 4 times a year.

Certificate about registration the edition N 287, November, 14, 1996,
was given by National agency on affaires of press and mass information
of the Republic of Kazakhstan.

Certificate about re-registration N 4636-Zh, January, 22, 2004,
was given by Ministry of information of the Republic of Kazakhstan.

The Committee of Science of Ministry of Education and Science of the Republic of Kazakhstan has included the Journal into the list of issues for publication of the main results of scientific-technical investigations of applicants for scientific degrees (Doctor philosophy PhD, Doctor on specialization) and academic ranks (Professor and Associate professor).

The Journal was included into international English-language abstracts database on technical sciences “INSPEC”.

Subscription to journal may be drawn up at post offices of OJSC “Kazpochta”,
in PLL Agency “Evraziya press” and PLL Agency “Evrika press” .

Subscription index:

for natural persons – **75188**,

for juristic persons – **25188**.

Subscription continues during a year.

Address of editorial offices: 050010, Almaty city, Bogenbay Batyr str., 80, off. 415.

Tel. 8-7272-915290, fax: 8-7272-915190,

e-mail: nia_rk@mail.ru, ntpneark@mail.ru, www.neark.kz



***Бакытжан ЖУМАГУЛОВ,**
депутат Сената Парламента РК,
доктор технических наук,
академик НАН РК*

ДОБРАЯ ВОЛЯ – РАЗВИТИЮ И КОНСОЛИДАЦИИ

В наше очень непростое время люди Земли особенно нуждаются в доброй воле – объединяющей, а не разъединяющей человечество. На следующей неделе Нур-Султан станет грандиозной диалоговой площадкой: 14–15 сентября в столице Казахстана состоится VII Съезд лидеров мировых и традиционных религий. Его главная тема: «Роль лидеров мировых и традиционных религий в духовном и социальном развитии человечества в постпандемический период». Заявки на участие в форуме подали 108 делегаций из 50 стран, уже аккредитованы 188 зарубежных журналистов, в том числе из Euronews, BBC, CNN, Bloomberg, AlJazeera.

Уже стало доброй традицией проводить глобальный межрелигиозный конгресс в городе на берегах Есиля, в самом сердце Евразии. И периодичность определена: собираться раз в три года. Первый съезд прошел в 2003-м, последующие – в 2006, 2009, 2012, 2015 и 2018 годах. Нарушена периодичность впервые из-за разразившейся пандемии коронавируса, но, наконец, и этот барьер преодолен.

Четыре года спустя мы живем ожиданием очередной сентябрьской встречи руководителей конфессий. И прогноз погоды вновь благоприятный: будет солнечно.

...Мысленно возвращаюсь в незабываемый 2001 год, по моему убеждению, ставший предвестником создания совершенно нового системного механизма духовно-политического партнерства высокого уровня и широчайшего охвата.

23 сентября в молодую столицу суверенной республики нанес исторический визит Папа Римский Иоанн Павел II. Совсем скоро после потрясшей весь мир американской трагедии 11 сентября в Нью-Йорке. Понтифик не отменил поездку, и это всех впечатлило. Ничто не может поколебать праведную волю к миру и добру.

И твердый шаг понтифика навстречу другим верованиям, благородный посыл к взаимодействию культур и цивилизаций был по достоинству оценен казахстанцами.

Папа провел несколько встреч, в том числе с молодежью в ЕНУ имени Л. Н. Гумилева. А кульминацией визита стала Святая месса у Монумента защитникам Отечества, в которой приняли участие более 35 тыс. человек.

Святое благословение коснулось не только Казахстана, его народа, но и персонально многих граждан, поскольку понтифик был открыт для общения. Мне тоже посчастливилось засвидетельствовать почтение главе католической церкви.

По завершении визита в послании Папы Римского Первому Президенту РК Нурсултану Назарбаеву было сказано: «Я вновь заверяю Ваше Превосходительство в моих молитвах о том, дабы Казахстан мог черпать все больше силы из своего богатого духовного культурного наследия и таким образом был в состоянии ответить на многие вызовы, стоящие перед страной на новом этапе ее развития. Да благословит Бог Казахстан, его усилия по созданию общества, крепко стоящего на основе уважения прав и достоинств каждой личности и всех народов».

Сам факт, атмосфера и безукоризненная организационная работа по обеспечению визита, несомненно, добавили имиджевой привлекательности стране. И когда в феврале 2003 года на Международной конференции мира и согласия была озвучена идея проведения межрелигиозного форума в столице Казахстана, она получила весомую поддержку, что сделало возможным созвать такой съезд уже в сентябре.

Съезд стал неординарным событием, в нем участвовали делегации 17 религиозных организаций из 13 стран (сравните с сегодняшними данными – 108 из 50 – очень значимый прогресс). Он подтвердил актуальность и востребованность воплощения идеи сотрудничества и единения представителей различных религий во имя мирной и достойной жизни людей всей планеты. Инициативу проведения его на постоянной основе поддержали такие влиятельные политики, как Кофи Аннан, Джордж Буш, Маргарет Тэтчер, Цзян Цзэминь, Нельсон Мандела, Валери Жискар д'Эстен и другие.

К 2006 году у съезда и свой «офис» появился – Дворец Мира и Согласия. Это величественное сооружение ассоциируется также с Ассамблеей народа Казахстана, проводящей там большинство своих мероприятий. Что логично, ведь цели совпадают – единение, согласие ради всеобщего благополучия. А рабочим органом стал секретариат съезда. Эффективную систему организационных, идеологических и концептуальных компонентов Съезда лидеров мировых и традиционных религий как фундаментальную основу этой глобальной платформы выстроил во время своего председательства в Сенате и в качестве руководителя секретариата съезда Касым-Жомарт Токаев. В результате обеспечение деятельности исполнительной структуры форума де-факто закрепилось за верхней палатой казахстанского Парламента.

Горжусь, что как сенатор причастен к этой работе. В частности, в составе делегации во главе с председателем Сената Парламента РК, руководителем секретариата Съезда лидеров мировых и традиционных религий Мауленом Ашимбаевым в ноябре 2021 года посетил Ватикан. Маулен Ашимбаев от имени Президента страны Касым-Жомарта Токаева вручил понтифику приглашение на предстоящий VII съезд. Состоялись переговоры с главой Ватикана и руководителями его служб.

Подтвержденное участие Папы Римского Франциска означает выход глобального межрелигиозного форума на новый уровень. Это – свидетельство высокого международного авторитета нашей страны и знак признания успехов этноконфессиональной политики Казахстана.

Также планируется прибытие больших делегаций и авторитетных лидеров: шейха Аль-Азхара Верховного имама ат-Тайеба, председателя управления мусульман Кав-

каза шейха Паше-Заде, председателя отдела внешних церковных связей Московского патриархата митрополита Антония, патриарха Иерусалимского Феофила III, главных раввинов Ашкеназского и Сефардского Давида Лау и Ицхака Иосефа, председателя Ассоциации буддистов Китая Янь Цзюэ и других. В съезде примут участие представители 10 религий и ведущих конфессий: ислама, христианства, буддизма, иудаизма, индуизма, синтоизма, даосизма, зороастризма, джайнизма, бахаи. Кроме того, будут представлены 24 международные организации.

Местом проведения VII Съезда лидеров мировых и традиционных религий определен Дворец Независимости, а XX заседания секретариата съезда и его рабочей группы – Дворец Мира и Согласия.

Разнообразна тематика секционных заседаний: «Роль религии в укреплении духовных и моральных ценностей в современном мире», «Роль образования и религиозного просвещения в уважительном сосуществовании религий и культур, укреплении мира и согласия», «Вклад религиозных лидеров и политиков в продвижение глобального межрелигиозного диалога и мира, противодействие экстремизму, радикализму и терроризму», «Вклад женщины в благополучие и устойчивое развитие современного общества и роль религиозных сообществ в поддержке социального статуса женщины».

И будет, как и 21 год назад, большая месса Папы Римского – 14 сентября на территории международного выставочного центра ЕХРО. Начнется она в 16.45 по времени Нур-Султана. В ней планируют принять участие тысячи паломников из Казахстана, Узбекистана, Монголии, Кыргызстана, России и других стран.

Уверен, что VII Съезд лидеров мировых и традиционных религий пройдет успешно и внесет значимый вклад в духовную и нравственную консолидацию человечества, системное противодействие современным негативным тенденциям. А Казахстан еще раз подтвердит свой высокий авторитет как эффективная площадка для диалогов и переговоров самого высокого уровня.

*«Казахстанская правда»
от 9 сентября 2022 года
№ 172 (29799) 4 стр.*

**A. G. OSPAN^{1*}, M. E. MANSUROVA¹, YE. KH. KAKIMZHANOV¹,
S. SH. IXANOV¹, V. B. BARAKHNIN^{2,3}**

¹*Al-Farabi Kazakh National University, Almaty, Kazakhstan*

²*Federal Research Center for Information and Computing Technologies,
Novosibirsk, Russia*

³*Novosibirsk State University, Novosibirsk, Russia*

DEVELOPMENT OF A PROGRAM FOR THE INTEGRATION OF SOCIO-ECONOMIC INDICATORS WITH SPATIAL DATA TO ANALYZE THE STANDARD OF LIVING OF THE POPULATION OF KAZAKHSTAN

Up-to-date and reliable information is vital for assessing the socio-economic status of the population and effective decision-making. With the help of a spatial information base, social security and living standards data can be integrated to formulate strategic development plans and improve decision-making. This article presents the work on the integration of information about the standard of living and social security of the inhabitants of Kazakhstan with the display of data on the map. GIS tools were used for integration, as the latest technological advances in this field allow the manipulation of large amounts of geographic data and the creation of a spatial environment with socio-economic data. This work includes collecting unstructured data from the Bureau of National Statistics, reformatting the data into a structured database as an attribute-value pair, calculating important living standards indicators such as the real income index, the depth and severity of poverty and the social inequality index, and monitoring the results on the web map to compare regions based on the results obtained. It is also important to note the operation performed for the gridding of table attributes, since it was implemented automatically using the GIS tool. The results of the work are presented for three important indicators of the standard of living and displayed on a map using a heat map to visually show the changes in the indices for each region of Kazakhstan.

Key words: *socio-economic information, living standards indicators, spatial data, GIS, map visualization, data extraction.*

Introduction. Economics professionals and governments need powerful tools to help them analyze, display and disseminate results, and make informed decisions about where to create new jobs or improve the quality of life in a given region [1]. Today, GIS technologies (such as ArcGIS Pro, QGIS, Google Earth Engine) are powerful and efficient in realizing these functions, helping economic professionals to support and control the change and growth of people's social life. A GIS facilitates the study of geographic distribution (single columns of an attribute table focusing on trends), geographic variation (single columns of an attribute table focusing on fluctuations), and geographic relationships (pairs of columns in an attribute table) [2].

Statistics are generally mathematical calculations such as mean, squared error, variance, correlation, and other mathematical statistics that support the scientific collection, organization, analysis, and interpretation of sample data to draw conclusions about their original population. Spatial statistical and econometric methods are broadly classified into three sub-domains based on the characteristics of spatial data: spatial point structures, geo-statistics, and attributes associated with discrete spatial units, mainly polygons [3].

* E-mail корреспондирующего автора: asselyaospan@gmail.com

The procedure for integrating socio-economic data and spatial reference of heterogeneous data is shown in Figure 1. This model was presented by the International Cartographic Association in its work “Cartography beyond the ordinary world” [4]. Using this model for statistical data associated with geographic features, one can obtain a spatial factor atlas about the main socio-economic indicators and convert the statistics into spatial data. Thus, the quantitative distribution in the cells of the spatial grid and integration with natural statistics data will be implemented.

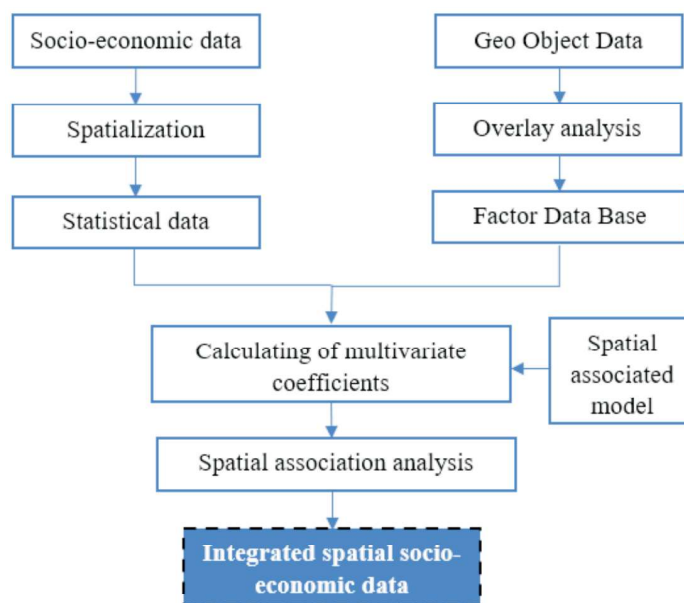


Figure 1 – Diagram of a model for integrating socio-economic data with spatial data

Based on this scheme, our tasks of integrating indicators of the level of social life of the people of Kazakhstan with a GIS-based spatial database with data visualization on a web map for a better understanding of the situation and comparison of results were completed.

Related work. Recent technological advances in GIS make it possible to manipulate large amounts of geographic data and create spatial environments with socioeconomic data. The creators of ArcGIS [5] have introduced a separate package called “GIS for Economic Development”, where the thematic map has a table of contents that allows the reader to add layers of information to the base map. For example, a sociologist can use a base map of a particular country, and add datasets from the Bureau of Statistics to add layers of data to a map that shows the standard of living, age, and employment status of residents, thus combining multiple datasets in an infinite number of ways.

Recognizing the synergies (from the integration of GIS and spatial statistics/econometrics), spatial data scientists have proposed and made efforts to integrate the technical fields of the two disciplines [6]. Recent developments have resulted in greater availability of spatial statistics and econometrics tools on various platforms, including commercial GIS software (e.g. ArcGIS), statistical and mathematical software (e.g. Python), stand-alone packages and libraries in popular programming environments. Spatial statistical and econometric methods are broadly classified into three sub-domains based on the characteristics of spatial

data: structures, geo-statistics and attributes associated with discrete spatial units, mainly polygons [7]. Fischer, M.M., Getis, A. provide an extensive overview of spatial statistics and econometrics tools [8].

Griffith D.A. points out that one of the goals of spatial statistics is to provide a better understanding of how geographic landscapes function, some of which are economies of space [9]. It poses the following challenges for spatial econometricians, as suggested by contemporary spatial statistical work: (1) formulate efficient and efficient implementations of spatial autoregression for massive georeferenced datasets; (2) determining the usefulness of the main eigenvector of the geographic weights matrix for empirical analysis; (3) transformation of georeferenced data generation mechanisms in terms of mixed parametric models including spatial filters based on eigenvectors; and (4) improving our understanding of the terms spatially structured random effect (SSRE) and spatially unstructured random effect (SURE) that can appear in spatial statistical/econometric model specifications.

Introducing the term “spatial econometrics”, Paelinck, J. emphasizes the need to account for geographic dependence in spatial models, eliminate asymmetries in spatial relationships, recognize the importance of covariates located elsewhere, and include topological variables that explicitly span space. in the model specification [10].

Spatial statisticians often deal with observational data and therefore conduct correlation studies. Paelinck J. points out that one of the goals of spatial econometrics is to better understand how spatial economics works [10]. He discusses specification and multiple modes in the context of spatiotemporal representations. He concludes that partial difference equation models appear to be a suitable analysis tool for large sets of small spatial units. In conclusion, especially applied spatial statistics/econometrics has been made possible by the existence of GIS and other computer software packages. Let's take a look at the work done in this area.

In [11], the authors applied GIS to integrate social, economic and environmental factors to assess land vulnerability to degradation in the Pir Panjal Himalayas, Kashmir, India. In this work, a GIS tool was used to obtain information about irrigated lands and vegetation areas, as well as lands where degradation is high. The data obtained were compared with population density, age of residents, and economically important enterprises.

The authors of [12] present a GIS method for modeling ecosystem services by mapping socio-economic scenarios. As a result, the authors developed scenarios with the involvement of local stakeholders and experts to determine how major land cover classes might change under the influence of different sets of factors, formalized spatial rules such as agriculture can only occur on certain soil types, and created a future land cover map. cover, which can then be used to model ecosystem services.

The work [13] provides an analysis of the human resources of Kazakhstan based on GIS. Demographic, social, economic and environmental indicators were used to calculate human resources. Here, the results of the calculation of human resources are displayed on a map of Kazakhstan, where cities are identified as a “talent magnet”, industrial areas and peripheral regions with the lowest rates, and an analysis of the reasons for such results is also made.

Based on the above works, it can be concluded that the integration of socio-economic data with GIS is an effective method and gives a positive result in the course of analysis and research.

If we turn to the implementation of our program, then different methods and tools were used here. For example, for our work, all tabular data are taken from the Bureau of National Statistics [14] and they are in the form of unstructured data. To solve this problem, the article [15] provides a CRL (Cells Rule Language) method that extracts data from arbitrary semi-structured tables (in text formats, spreadsheets and web tables) and transforms them into a structured form from which they can be loaded to the database using standard ETL tools (Extract, Transform, Load). A formal language of rules for the analysis and interpretation of tables, called CRL (Cells Rule Language), has been proposed. The execution of such rules allows you to restore the semantics of the table, which was originally absent, but necessary for extracting and transforming tabular information. The complete implementation algorithm is given in [16].

As soon as our tables are brought into a structured database, and are ready for manipulation for calculation, an economic model will be built to assess the standard of living of the population of Kazakhstan. In [13], four indicators are used to calculate human resources, and the results are successful, therefore, a similar model will be used for our economic model, only indicators for the standard of living of the population.

Materials and methods. To accomplish our tasks, the following steps will be performed:

1. Collection of data from the Bureau of National Statistics.
2. Converting unstructured tabular data to structured databases using SQL.
3. Selection of living standards indicators based on the UN guidelines for measuring poverty: the index of real money incomes of the population, the severity of poverty, the depth of poverty and the inequality index (Gini coefficient)).
4. Construction of an economic model for effective analysis of the standard of living of the population.
5. Performing coordinate referencing of all regions of Kazakhstan and visualizing the results on a web map for comparison and analysis.

The definition of the term poverty is described in the guidelines on measuring poverty by the United Nations Economic Commission for Europe [17]. This guide notes the concept of inequality, which is measured by the Gini coefficient, as well as the monetary approach to poverty, including in terms of income and consumption spending, most commonly used to measure poverty in monetary terms. It is now widely recognized that the concept of poverty goes beyond the material conditions of people's lives and is also expressed in ill health, job insecurity, social exclusion, malnutrition, and personal insecurity.

Based on UN information, for the study of the living standards of Kazakhstan, indicators such as the index of real money incomes of the population, the severity of poverty, the depth of poverty and the inequality index (Gini coefficient) from the Bureau of National Statistics of Kazakhstan (1) were selected.

The depth of poverty index shows how far people have fallen below the poverty line (depth of poverty) as a percentage of the poverty line. The depth of poverty index can be expressed as follows (formula 1):

$$P_0 = \frac{1}{N} \sum_{i=1}^N \frac{G_i}{z} \quad (1)$$

where the poverty gap (G_i) is equal to the poverty line minus actual (equivalent) income or expenditure for those living in poverty and zero for those who are not.

The following formula (2) also calculates the poverty depth coefficient (P1), which characterizes the average distance of the poor from the poverty line:

$$P_1 = \frac{1}{n} \sum_{i=1}^n \left[\max \left(\frac{z - x_i}{z}; 0 \right) \right]^1 \quad (2)$$

where z is the average subsistence minimum for one member of the household; x_i is the indicator of the per capita income index of person i covered by the survey; n is the total surveyed population.

The poverty severity coefficient (P2), which characterizes the degree of inequality among the poor, is calculated using formula (3):

$$P_1 = \frac{1}{n} \sum_{i=1}^n \left[\max \left(\frac{z - x_i}{z}; 0 \right) \right]^2 \quad (3)$$

The difference between the poverty depth ratio and the poverty severity ratio is that the latter is calculated more heavily by households that are severely underfunded.

The Gini coefficient (Income Concentration Index) is a statistic for assessing economic equality. It was invented by the economist Gini Corrado [17]. It shows the even distribution of income or wealth among the members of society. The coefficient is measured using a graphical method - the Lorenz curve. To get the Gini coefficient, you need to: a) calculate the area of the figure (T), which is formed by the line of absolute equality and the Lorenz curve; b) calculate the area of triangle OFE; c) divide the area T by the area OFE: Gini coefficient = T / OFE.

As a result, we get a number from 0 to 1. If incomes are evenly distributed, then the indicator will be 0, if everything belongs to one person, then - 1. In general, the lower the Gini coefficient, the better, the less economic inequality in the country.

After receiving the results of the above indicators of the standard of living, it is necessary to perform a spatial reference to the regions of Kazakhstan. To perform this task, the ArcGIS tool will be used, since there is a tool that automatically determines vector x , y coordinates from the names of areas, without adding extra attributes to the tables. For the best understanding and analysis of the results, a heat map will be applied, which will highlight the regions in comparison with each other.

Results and discussion. Based on the above calculations, results were obtained from 2001 to 2021 for the regions of Kazakhstan. To visualize and compare the results, the data will be displayed on a map using a heat map, where the colors change from the minimum to the maximum value. The convenience of using a web map is that the user himself can choose the colors he needs, thus making it easier to read the results on the map.

Using formulas (1), (2) and (3), we have obtained indicators of the depth and severity of poverty from 2001 to 2021. (Table 1) life of the population over the past 10 years.

Table 1 – Indicators of the depth and severity of poverty in the regions of Kazakhstan from 2001 to 2021.

Regions of Kazakhstan										
Akmola Region	12,2	8,5	1,3	0,5	1,2	5,0	3,2	0,5	0,1	0,4
Aktobe Region	15,0	8,0	0,5	0,3	0,6	7,1	3,0	0,1	0,1	
Almaty	3,9	1,4	0,2	0,1	1,0	1,2	0,3	0,0	0,0	0,3
Almaty Region	20,8	6,7	0,3	0,3	0,7	9,5	2,1	0,1	0,1	0,2
Atyrau Region	20,6	14,7	0,5	0,1	0,2	10,2	5,4	0,1	0,0	0,0
East Kazakhstan Region	12,3	6,6	1,5	0,5	0,9	5,5	2,4	0,5	0,2	0,2
Jambyl Region	24,0	9,4	0,6	0,5	0,5	10,3	3,0	0,1	0,1	0,1
Karaganda Region	11,3	5,0	0,6	0,3	0,5	4,7	1,8	0,2	0,1	0,1
Kostanay Region	15,0	9,7	0,9	0,5	0,5	7,3	3,8	0,3	0,1	0,1
Kyzylorda Region	17,8	10,5	0,8	0,4	0,7	6,8	3,2	0,2	0,1	0,2
Mangystau Region	23,2	7,5	1,1	0,4	1,6	11,4	2,2	0,2	0,1	0,5
North Kazakhstan Region	6,3	7,1	1,8	0,8	0,8	2,4	2,5	0,6	0,3	0,2
Nur-Sultan	1,6	0,8	0,4	0,1	0,3	0,5	0,3	0,1	0,0	0,1
Pavlodar Region	9,3	4,5	0,9	0,2	0,6	3,8	1,5	0,3	0,1	0,1
South Kazakhstan Region	19,0	10,0	1,8	0,4	0,9	8,0	3,0	0,5	0,1	0,2
West Kazakhstan Region	13,9	8,3	0,9	0,5	0,7	5,6	2,9	0,2	0,1	0,1

■ - max indicators, ■ - min indicators.

In this Table 1, the regions marked in orange and green have the highest depth of poverty and the lowest. In Mangystau and North Kazakhstan regions, the depth of poverty is higher than in other cities, which indicates an unsatisfactory standard of living in these regions. Below are graphs for a better comparison of results over the past 10 years. (Figure 2, 3)

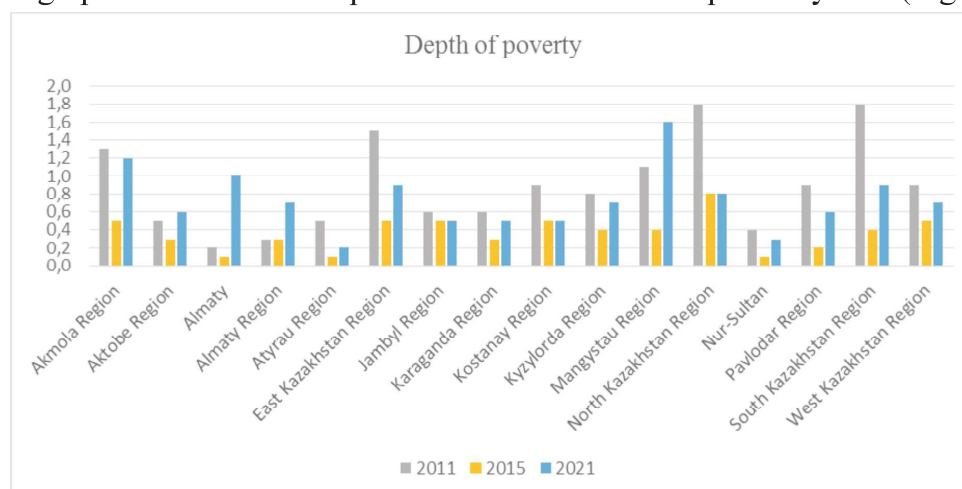


Figure 2 – Indicators of the depth of poverty of the regions of Kazakhstan from 2011 to 2021

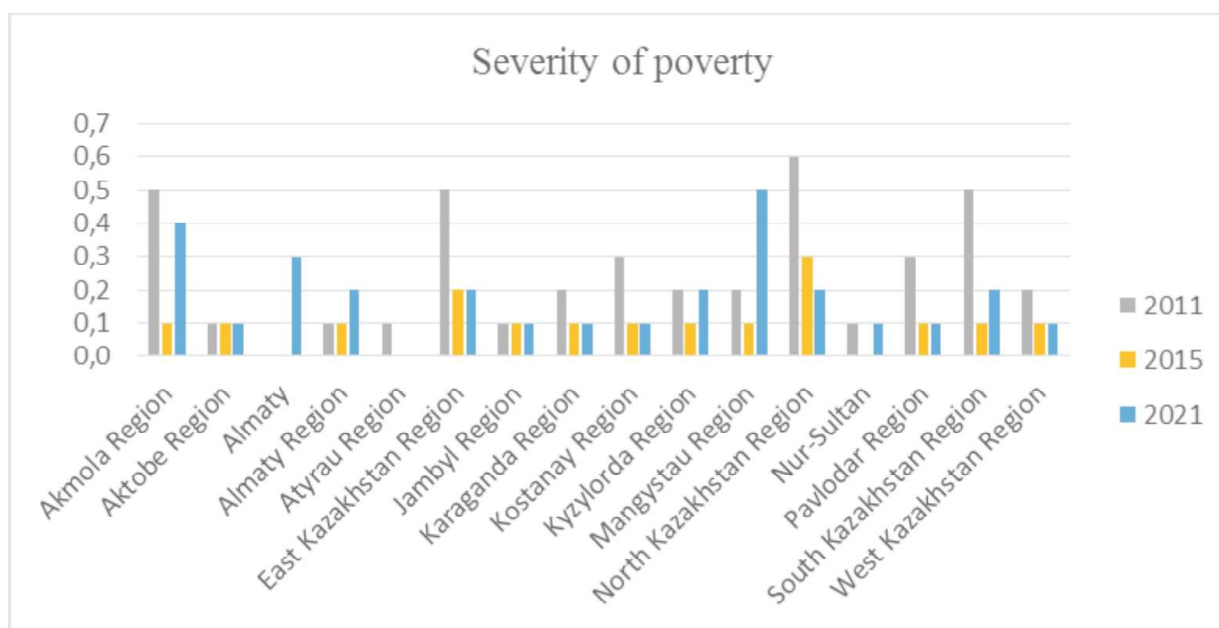


Figure 3 – Poverty severity rates of the regions of Kazakhstan from 2011 to 2021

The depth and severity of poverty indicators for 2021 were displayed on a web map using a regional and heat map, where the color changes depending on the value of the coefficient. (Figure 4). Here we can see that two layers are used. The first layer displays tabular data for the depth of poverty, and colors from light blue to dark blue. The second layer is a heat map for poverty severity, in red and green circles.

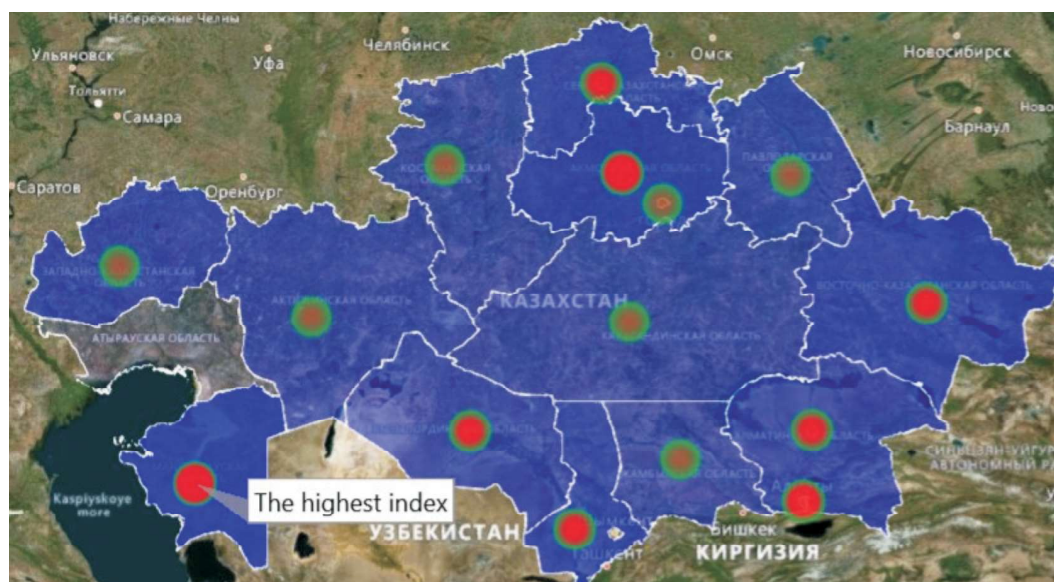


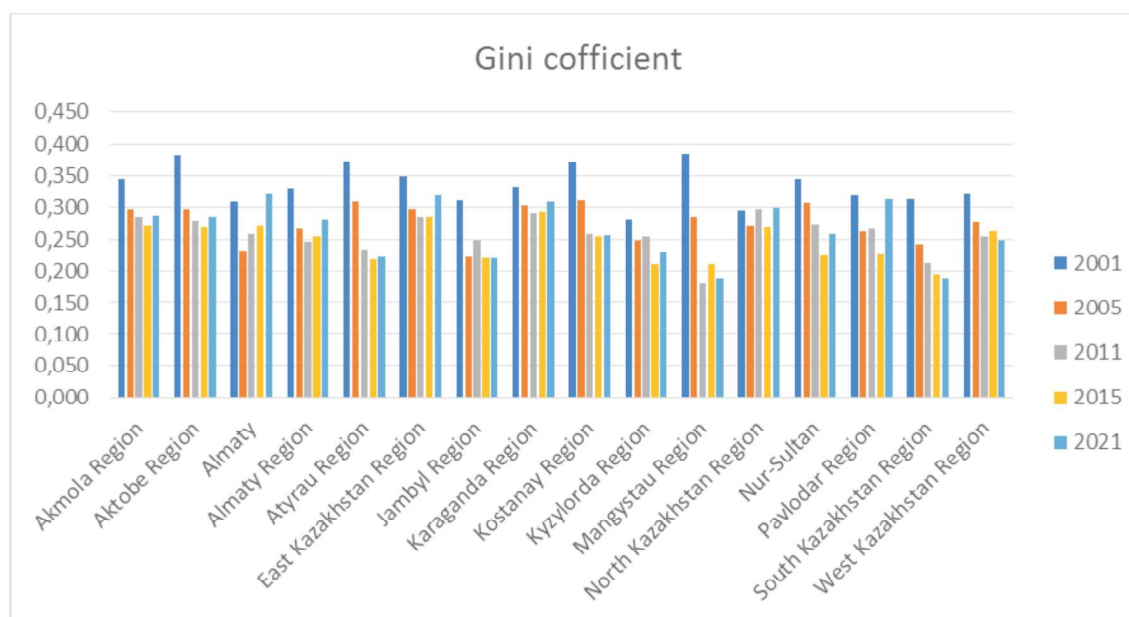
Figure 4 – Displaying data of depth and severity of poverty for regions of Kazakhstan for 2021 on the web map

Table 2 shows the performance of the Gini coefficient from 2001 to 2021, as mentioned above, the lower the Gini index and close to zero, the more equal the region is and vice versa.

Table 2 – Indicators of the Gini coefficient for the last 20 years in all regions of Kazakhstan.

Regions of Kazakhstan	2001	2005	2011	2015	2021	Regions of Kazakhstan	2001	2005	2011	2015	2021
Akmola Region	0,344	0,297	0,284	0,270	0,287	Kostanay Region	0,370	0,310	0,258	0,254	0,256
Aktobe Region	0,382	0,296	0,278	0,269	0,285	Kyzylorda Region	0,280	0,248	0,255	0,210	0,230
Almaty	0,309	0,233	0,259	0,271	0,321	Mangystau Region	0,385	0,284	0,180	0,210	0,188
Almaty Region	0,331	0,267	0,246	0,255	0,280	North Kazakhstan Region	0,295	0,271	0,296	0,269	0,298
Atyrau Region	0,372	0,309	0,234	0,219	0,222	Nur-Sultan	0,345	0,306	0,272	0,224	0,259
East Kazakhstan Region	0,348	0,296	0,285	0,284	0,319	Pavlodar Region	0,318	0,263	0,266	0,226	0,312
Jambyl Region	0,310	0,222	0,248	0,221	0,220	South Kazakhstan Region	0,313	0,242	0,213	0,194	0,188
Karaganda Region	0,333	0,303	0,291	0,292	0,309	West Kazakhstan Region	0,321	0,276	0,255	0,263	0,249

Here you can see that social inequality for 2021 is more pronounced in the largest city of Kazakhstan - Almaty, where the incomes of the population are very different from each other. Also, the North Kazakhstan region showed the best results for 2015 and 2021, which indicates that the incomes of the population are close to each other. The developed countries of the world practice economic models that help bring the Gini coefficient closer to 0 [16]. In Figure 5, one can observe the declining dynamics for all regions, here the conclusion is that the country has improved its social condition over the past 20 years. On the one hand, it is necessary to take into account both devaluation and other categories that mainly describe economic development and the standard of living of the population. However, these tasks are outside the scope of our work.

**Figure 5** – Graph of Gini coefficient indicators from 2001 to 2021 for the regions of Kazakhstan

Below the data display of the Gini coefficient is shown in Figure 6, where a heat map is used, which highlights areas by their values: red - maximum, yellow - average, green - minimum. There is also a sheet map displaying tabular data for 20 years of the geobject to which the coordinate referencing is performed.

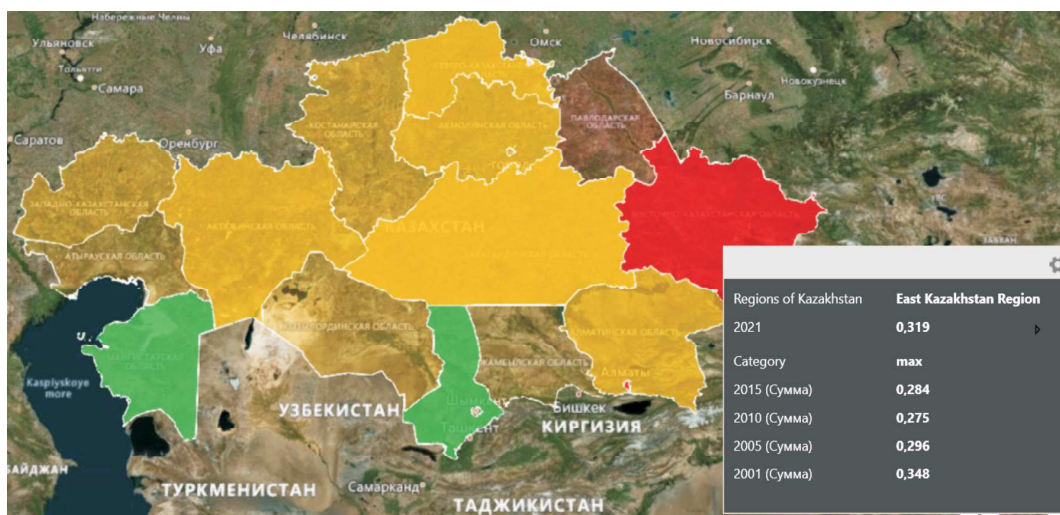


Figure 6 – Heatmap of Kazakhstan with Gini coefficient indicators for 2021

In the future, the establishment of such tasks as finding the causes of poverty, identifying the stability of variability is to be set. For example, a significant number of employed population on life indices, between such indicators of labor/employment and acute poverty, a direct or inverse correlation, and whether there is a relationship between fast working youth and the level of income in the region. That is, it requires a thorough analysis of all indicators that are relevant to the socio-economic life of the population. All these works will be carried out in anticipation of our research.

Conclusion. Our main goal in this work was to integrate socio-economic indicators with the map for better monitoring and comparison of results. To accomplish these tasks, a collection of unstructured tabular data was made, consisting of indicators describing the socio-economic condition of the population. Since there are many indicators, it was important to choose the most important 3-4 indicators. Moreover, the choice was made in favor of such indicators as the severity of poverty, the depth of poverty and the inequality index (Gini coefficient). Mean income measures were used to calculate the Gini coefficient. All calculations were made in ArcGIS Analytics, it is important to properly prepare the incoming data.

After receiving the results, the regions were coordinated to the map, where the program automatically recognized the vector coordinates of all regions of Kazakhstan. Here it should be taken into account that today the ArcGIS program recognizes names only in English.

Since, now we are interested in automatically displaying attribute values on a map, only a vector map was used, where raster data is not specified. In addition, for the best understanding, a heat map layer has been added where the color changes depending on the value.

Based on the results obtained, we can say that all our tasks that we set at the beginning have been completed, there are also new tasks that, based on this work, we will continue in the future.

REFERENCES

- 1 Romanee Thongdara & Lal Samarakoon , Rajendra P. Shrestha & S. L. Ranamukhaarachchi. Using GIS and Spatial Statistics to Target Poverty and Improve Poverty Alleviation Programs: A Case Study in Northeast Thailand. *Applied Spatial Analysis and Policy* 5(2). 2012 <http://dx.doi.org/10.1007/s12061-011-9066-8>
- 2 Daniel A Griffith and Yongwan Chun. *GIS and Spatial Statistics/Econometrics: An Overview* University of Texas at Dallas, Richardson, TX, United States. 2018. <http://dx.doi.org/10.1016/B978-0-12-409548-9.09680-9>
- 3 Chun, Y., Griffith, D.A. Spatial statistics and geostatistics. *International journal of geographical information science*. Volume 30, 2016-Issue 6. <https://doi.org/10.1080/13658816.2015.1107074>
- 4 Paula Juliasz, Sonia Vanzella Castellar. *Cartography beyond the ordinary world*. International Cartographic Association. Fluminense Federal University, Brazil. July 2018. <https://www.researchgate.net/publication/326585981>
- 5 GIS for Economic Development. ESRI company. 2018. <https://www.esri.com/content/dam/esrisites/sitecore-archive/Files/Pdfs/library/bestpractices/economic-development.pdf>
- 6 Goodchild, M.F. Geographical information science. *International Journal of Geographical Information Systems*, Vol. 15, No. 1, June 2009, 3–9. <http://dx.doi.org/10.1016/j.proeps.2009.09.160>
- 7 Cressie, N., Liu, D., *Spatial statistics in geographic information systems (GIS)*. Statistics Reference Online, Wiley StatsRef. 2014. <http://dx.doi.org/10.1002/9781118445112.stat07806>
- 8 Fischer M.M., Getis A., *Handbook of applied spatial analysis*. Springer, Berlin. 2010. <https://link.springer.com/book/10.1007/978-3-642-03647-7>
- 9 Griffith, D.A. Spatial weights. In: Richardson, D., Castree, N., Goodchild, M., Kobayashi, A., Liu, W., Martson, R. (Eds.), *International encyclopedia of geography*. Wiley, New York (forthcoming). *GIS and Spatial Statistics/Econometrics: An Overview*. 2017 <https://digitalcommons.unomaha.edu/facultybooks/316/>
- 10 Paelinck, J. Some challenges for spatial econometricians. Paper presented at the 2nd International Scientific Conference about Spatial Econometrics and Regional Economic Analysis, University of Lodz, Poland. June 4–5, 2013. <https://dspace.uni.lodz.pl/xmlui/bitstream/handle/11089/10455/01-paelinck.pdf?sequence=1&isAllowed=y>
- 11 Shakil Ahmad Romshoo, Muzamil Amin, K.L.N. Sastry, Manish Parmar. 2020. Integration of social, economic and environmental factors in GIS for land degradation vulnerability assessment in the Pir Panjal Himalaya, Kashmir, India. *Applied Geography*, Volume 125 (2020) 102307. <https://doi.org/10.1016/j.apgeog.2020.102307>
- 12 R D Swetnam, B Fisher, B P Mbilinyi, P K T Munishi, S Willcock, T Ricketts, S Mwakalila, A Balmford, N D Burgess, A R Marshall, S L Lewis. Mapping socio-economic scenarios of land cover change: A GIS method to enable ecosystem service modelling. 2011 Mar;92(3):563-74. <https://doi.org/10.1016/j.jenvman.2010.09.007>
- 13 Nyussupova, G., Aidarkhanova, G., Kenespayeva, L., & Kelinbayeva, R. (2022). Analysis of Human Capital in the Republic of Kazakhstan through GIS: Regional Aspect . *International Journal of Geoinformatics*, 18(1), 15–25. <https://doi.org/10.52939/ijg.v18i1.2099>
- 14 Agency for Strategic planning and reforms of the Republic of Kazakhstan Bureau of National statistics. <https://stat.gov.kz/>
- 15 A. O. Shigarov, I. V. Bychkov, V. V. Paramonov, P. V. Belykh. 2015. Analysis and interpretation of arbitrary tables based on the execution of CRL rules. *Computing technologies* Vol. 20, No. 6, 2015 <http://www.ict.nsc.ru/jct/getfile.php?id=1704>
- 16 Shigarov, A. Table understanding using a rule engine // *Expert Systems with Applications*. 2015. Vol. 42, No. 2. P. 929–937. <https://doi.org/10.1016/j.eswa.2014.08.045>

17 Poverty Measurement Guide. UNITED NATIONS ECONOMIC COMMISSION FOR EUROPE. New York and Geneva, 2017 https://unece.org/fileadmin/DAM/stats/publications/2018/ECECESSTAT20174_ru.pdf

**Ә. Ғ. ОСПАН¹, М.Е. МАНСУРОВА¹, Е.Х. КАКИМЖАНОВ¹, С.Ш. ИКСАНОВ¹,
В.Б. БАРАХНИН^{2,3}**

¹ Әл-Фараби атындағы Қазақ ұлттық университеті, Алматы, Қазақстан

² Ақпараттық және есептеуіш технологиялар федералды зерттеу орталығы,
Новосибирск, Ресей

³ Новосибирск мемлекеттік Университеті, Новосибирск, Ресей

ҚАЗАҚСТАН ХАЛҚЫНЫҢ ӨМІР СҮРУ ДЕҢГЕЙІН ТАЛДАУ ҮШІН ӘЛЕУМЕТТІК-ЭКОНОМИКАЛЫҚ КӨРСЕТКІШТЕРДІ КЕҢІСТІКТІК ДЕРЕКТЕРМЕН ИНТЕГРАЦИЯЛАУ БАҒДАРЛАМАСЫН ӘЗІРЛЕУ

Халықтың әлеуметтік-экономикалық жағдайын бағалау және тиімді шешімдер қабылдау үшін өзекті және сенімді ақпарат қажет. Кеңістіктік ақпараттық базаның көмегімен әлеуметтік қамсыздандыру мен өмір сүру деңгейі туралы деректерді стратегиялық даму жоспарларын әзірлеу және шешім қабылдау процесін жақсарту үшін біріктіруге болады. Бұл мақалада Қазақстан тұрғындарының өмір сүру деңгейі мен әлеуметтік қамтамасыз етілуі туралы ақпаратты картада көрсете отырып интеграциялау бойынша жұмыстар ұсынылған. Интеграция үшін ГАЖ құралдары қолданылды, өйткені осы саладағы соңғы технологиялық жетістіктер географиялық деректердің үлкен көлемін басқаруға және әлеуметтік-экономикалық деректермен кеңістіктік орта құруға мүмкіндік береді. Бұл жұмыс Ұлттық статистика бюросынан құрылымданбаған деректерді жинауды, деректерді атрибуты-мәні жұбы ретінде құрылымдалған дерекқорға қайта форматтауды, нақты табыс индексі, кедейліктің тереңдігі мен ауырлығы және әлеуметтік теңсіздік индексі сияқты өмір сүру деңгейінің маңызды көрсеткіштерін есептеуді қамтиды. Интернеттегі нәтижелерді бақылау, алынған нәтижелер негізінде аймақтарды салыстыруға арналған карта. Сондай-ақ, кесте атрибуттарының торын құру үшін жасалған операцияны атап өту керек, өйткені ол автоматты түрде ГАЖ құралының көмегімен жүзеге асырылды. Жұмыс нәтижелері өмір сүру деңгейінің үш маңызды көрсеткіші бойынша ұсынылған және Қазақстанның әрбір өңірі бойынша көрсеткіштердің өзгергенін көрнекі көрсету үшін жылды картасының көмегімен картада көрсетілген.

Түйін сөздер: әлеуметтік-экономикалық ақпарат, өмір сүру деңгейінің көрсеткіштері, кеңістіктік деректер, ГАЖ, картографиялық визуализация, деректерді шығару.

**А.Г. ОСПАН¹, М.Е. МАНСУРОВА¹, Е.Х. КАКИМЖАНОВ¹,
С.Ш. ИКСАНОВ¹, В.Б. БАРАХНИН^{2,3}**

¹ Казахский национальный университет им. аль-Фараби, Алматы, Казахстан

² Федеральный исследовательский центр информационных и вычислительных технологий, Новосибирск, Россия

³ Новосибирский государственный университет, Новосибирск, Россия

РАЗРАБОТКА ПРОГРАММЫ ИНТЕГРАЦИИ СОЦИАЛЬНО-ЭКОНОМИЧЕСКИХ ПОКАЗАТЕЛЕЙ С ПРОСТРАНСТВЕННЫМИ ДАННЫМИ ДЛЯ АНАЛИЗА УРОВНЯ ЖИЗНИ НАСЕЛЕНИЯ КАЗАХСТАНА

Актуальная и достоверная информация необходима для оценки социально-экономического положения населения и принятия эффективных решений. С помощью пространственной информационной базы данные о социальном обеспечении и уровне жизни могут быть интегрированы для разработки стратегических планов развития и улучшения процесса принятия решений. В данной статье представлены работы по интеграции информации об уровне жизни и социальной обеспеченности жителей Казахстана с отображением данных на карте. Для интеграции использовались инструменты ГИС, поскольку последние технологические достижения в этой области позволяют манипулировать большими объемами географических данных и создавать пространственную среду с социально-экономическими данными. Эта работа включает в себя сбор неструктурированных данных из Бюро национальной статистики, переформатирование данных в структурированную базу данных в виде пары атрибут-значение, расчет важных показателей уровня жизни, таких как индекс реального дохода, глубина и серьезность бедности и индекс социального неравенства, отслеживание результатов в Интернете, карта для сравнения регионов на основе полученных результатов. Также важно отметить операцию, выполненную для построения сетки атрибутов таблицы, так как она была реализована автоматически с помощью инструмента ГИС. Результаты работы представлены по трем важным показателям уровня жизни и отображены на карте с помощью тепловой карты, чтобы наглядно показать изменение показателей по каждому региону Казахстана.

Ключевые слова: социально-экономическая информация, показатели уровня жизни, пространственные данные, ГИС, картографическая визуализация, извлечение данных.